

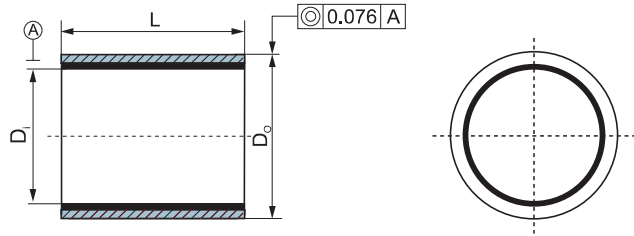
CSB-FWB™ 纤维缠绕轴承尺寸表(壁厚2.5mm) Standard Specifications (Wall 2.5mm)

可供规格 Specifications:

订购编码 Order PN:

CRB-20 25-30
 长度 Length
 外径 D_o
 内径 D_i

材料 Materials:
 CRM, CRB, CRG, CRP, CRW, CRF



长度公差表 Length tolerance table		B		
		≤75 mm	> 75 to < 150 mm	≥150 mm
D _i	≤75 mm	-0.50 mm	-1.00 mm	-1.50 mm
	> 75 to ≤120 mm	-1.00 mm	-1.00 mm	-1.50 mm
	> 120 to ≤150 mm	-1.00 mm	-1.50 mm	-1.50 mm

订购编码 Order PN	轴承尺寸 Bearing Size		推荐尺寸 Recommend		装配间隙 Assembly Interference	标准长度 Standard Length L
	内径 D _i	外径 D _o	轴 Shaft D _s h7	孔 Housing H7 D _h		
CRB-2025-L	20 ^{+0.196} / _{+0.116}	25 ^{+0.096} / _{+0.046}	20 ⁰ / _{-0.021}	25 ^{+0.021} / ₀	0.025-0.096	15、20、30
CRB-2227-L	22 ^{+0.196} / _{+0.116}	27 ^{+0.096} / _{+0.046}	22 ⁰ / _{-0.021}	27 ^{+0.021} / ₀	0.025-0.096	15、20、30
CRB-2530-L	25 ^{+0.196} / _{+0.116}	30 ^{+0.096} / _{+0.046}	25 ⁰ / _{-0.021}	30 ^{+0.021} / ₀	0.025-0.096	20、30、40
CRB-2833-L	28 ^{+0.200} / _{+0.120}	33 ^{+0.100} / _{+0.050}	28 ⁰ / _{-0.021}	33 ^{+0.025} / ₀	0.025-0.100	20、30、40
CRB-3035-L	30 ^{+0.200} / _{+0.120}	35 ^{+0.100} / _{+0.050}	30 ⁰ / _{-0.021}	35 ^{+0.025} / ₀	0.025-0.100	20、30、40
CRB-3540-L	35 ^{+0.200} / _{+0.120}	40 ^{+0.100} / _{+0.050}	35 ⁰ / _{-0.025}	40 ^{+0.025} / ₀	0.025-0.100	30、40、50
CRB-4045-L	40 ^{+0.200} / _{+0.120}	45 ^{+0.100} / _{+0.050}	40 ⁰ / _{-0.025}	45 ^{+0.025} / ₀	0.025-0.100	30、40、60
CRB-4550-L	45 ^{+0.230} / _{+0.130}	50 ^{+0.105} / _{+0.055}	45 ⁰ / _{-0.025}	50 ^{+0.025} / ₀	0.025-0.105	30、40、60
CRB-5055-L	50 ^{+0.230} / _{+0.130}	55 ^{+0.105} / _{+0.055}	50 ⁰ / _{-0.025}	55 ^{+0.030} / ₀	0.025-0.105	40、50、60
CRB-5560-L	55 ^{+0.245} / _{+0.145}	60 ^{+0.120} / _{+0.070}	55 ⁰ / _{-0.030}	60 ^{+0.030} / ₀	0.040-0.120	40、55、70
CRB-6065-L	60 ^{+0.245} / _{+0.145}	65 ^{+0.120} / _{+0.070}	60 ⁰ / _{-0.030}	65 ^{+0.030} / ₀	0.040-0.120	40、60、80
CRB-6570-L	65 ^{+0.245} / _{+0.145}	70 ^{+0.120} / _{+0.070}	65 ⁰ / _{-0.030}	70 ^{+0.030} / ₀	0.040-0.120	50、60、80
CRB-7075-L	70 ^{+0.245} / _{+0.145}	75 ^{+0.120} / _{+0.070}	70 ⁰ / _{-0.030}	75 ^{+0.030} / ₀	0.040-0.120	50、70、90
CRB-7580-L	75 ^{+0.275} / _{+0.175}	80 ^{+0.120} / _{+0.070}	75 ⁰ / _{-0.030}	80 ^{+0.030} / ₀	0.040-0.125	50、70、90
CRB-8085-L	80 ^{+0.275} / _{+0.175}	85 ^{+0.125} / _{+0.075}	80 ⁰ / _{-0.030}	85 ^{+0.035} / ₀	0.040-0.125	60、80、100
CRB-8590-L	85 ^{+0.275} / _{+0.175}	90 ^{+0.125} / _{+0.075}	85 ⁰ / _{-0.035}	90 ^{+0.035} / ₀	0.040-0.125	60、80、100
CRB-9095-L	90 ^{+0.275} / _{+0.175}	95 ^{+0.125} / _{+0.075}	90 ⁰ / _{-0.035}	95 ^{+0.035} / ₀	0.050-0.135	60、80、120
CRB-95100-L	95 ^{+0.310} / _{+0.185}	100 ^{+0.125} / _{+0.075}	95 ⁰ / _{-0.035}	100 ^{+0.035} / ₀	0.050-0.135	60、80、120
CRB-100105-L	100 ^{+0.310} / _{+0.185}	105 ^{+0.125} / _{+0.075}	100 ⁰ / _{-0.035}	105 ^{+0.035} / ₀	0.050-0.135	80、100、120
CRB-110115-L	110 ^{+0.315} / _{+0.190}	115 ^{+0.135} / _{+0.085}	110 ⁰ / _{-0.035}	115 ^{+0.035} / ₀	0.050-0.140	80、100、120
CRB-120125-L	120 ^{+0.340} / _{+0.215}	125 ^{+0.135} / _{+0.085}	120 ⁰ / _{-0.035}	125 ^{+0.040} / ₀	0.050-0.165	100、120、150
CRB-130135-L	130 ^{+0.340} / _{+0.215}	135 ^{+0.165} / _{+0.090}	130 ⁰ / _{-0.040}	135 ^{+0.040} / ₀	0.050-0.165	100、120、150
CRB-140145-L	140 ^{+0.340} / _{+0.215}	145 ^{+0.165} / _{+0.090}	140 ⁰ / _{-0.040}	145 ^{+0.040} / ₀	0.050-0.165	100、150、180
CRB-150155-L	150 ^{+0.340} / _{+0.215}	155 ^{+0.165} / _{+0.090}	150 ⁰ / _{-0.040}	155 ^{+0.040} / ₀	0.050-0.165	120、150、180

CSB-FWB™ 纤维缠绕轴承尺寸表(壁厚5mm) Standard Specifications (Wall 5mm)

可供规格 Specifications:

订购编码 Order PN:

CRB-20 30-30

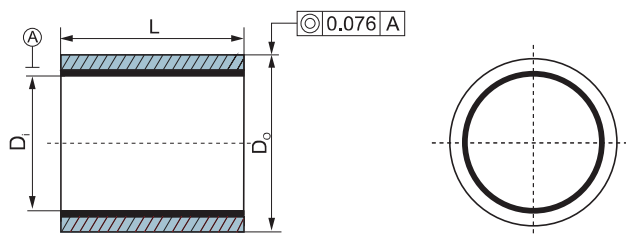
长度 Length

外径 D_o

内径 D_i

材料 Materials:

CRM, CRB, CRG, CRP, CRW, CRF



长度公差表 Length tolerance table		B		
		≤75 mm	> 75 to < 150 mm	≥150 mm
D_i	≤75 mm	-0.50 mm	-1.00 mm	-1.50 mm
	> 75 to ≤120 mm	-1.00 mm	-1.00 mm	-1.50 mm
	> 120 to ≤150 mm	-1.00 mm	-1.50 mm	-1.50 mm

订购编码 Order PN	轴承尺寸 Bearing Size		推荐尺寸 Recommend		装配间隙 Assembly Interference	标准长度 Standard Length L
	内径 D_i	外径 D_o	轴 Shaft D_s h7	孔 Housing H7 D_H		
CRB-2030-L	20 ^{+0.196} / _{+0.116}	30 ^{+0.096} / _{+0.046}	20 ⁰ / _{-0.021}	30 ^{+0.021} / ₀	0.025-0.096	15, 20, 30
CRB-2232-L	22 ^{+0.196} / _{+0.116}	32 ^{+0.096} / _{+0.046}	22 ⁰ / _{-0.021}	32 ^{+0.021} / ₀	0.025-0.096	15, 20, 30
CRB-2535-L	25 ^{+0.196} / _{+0.116}	35 ^{+0.096} / _{+0.046}	25 ⁰ / _{-0.021}	35 ^{+0.021} / ₀	0.025-0.096	20, 30, 40
CRB-2838-L	28 ^{+0.200} / _{+0.120}	38 ^{+0.100} / _{+0.050}	28 ⁰ / _{-0.021}	38 ^{+0.025} / ₀	0.025-0.100	20, 30, 40
CRB-3040-L	30 ^{+0.200} / _{+0.120}	40 ^{+0.100} / _{+0.050}	30 ⁰ / _{-0.021}	40 ^{+0.025} / ₀	0.025-0.100	20, 30, 40
CRB-3545-L	35 ^{+0.200} / _{+0.120}	45 ^{+0.100} / _{+0.050}	35 ⁰ / _{-0.025}	45 ^{+0.025} / ₀	0.025-0.100	30, 40, 50
CRB-4050-L	40 ^{+0.200} / _{+0.120}	50 ^{+0.100} / _{+0.050}	40 ⁰ / _{-0.025}	50 ^{+0.025} / ₀	0.025-0.100	30, 40, 60
CRB-4555-L	45 ^{+0.230} / _{+0.130}	55 ^{+0.105} / _{+0.055}	45 ⁰ / _{-0.025}	55 ^{+0.030} / ₀	0.025-0.105	30, 40, 60
CRB-5060-L	50 ^{+0.230} / _{+0.130}	60 ^{+0.105} / _{+0.055}	50 ⁰ / _{-0.025}	60 ^{+0.030} / ₀	0.025-0.105	40, 50, 60
CRB-5565-L	55 ^{+0.245} / _{+0.145}	65 ^{+0.120} / _{+0.070}	55 ⁰ / _{-0.030}	65 ^{+0.030} / ₀	0.040-0.120	40, 55, 70
CRB-6070-L	60 ^{+0.245} / _{+0.145}	70 ^{+0.120} / _{+0.070}	60 ⁰ / _{-0.030}	70 ^{+0.030} / ₀	0.040-0.120	40, 60, 80
CRB-6575-L	65 ^{+0.245} / _{+0.145}	75 ^{+0.120} / _{+0.070}	65 ⁰ / _{-0.030}	75 ^{+0.030} / ₀	0.040-0.120	50, 60, 80
CRB-7080-L	70 ^{+0.245} / _{+0.145}	80 ^{+0.120} / _{+0.070}	70 ⁰ / _{-0.030}	80 ^{+0.030} / ₀	0.040-0.120	50, 70, 90
CRB-7585-L	75 ^{+0.275} / _{+0.175}	85 ^{+0.125} / _{+0.075}	75 ⁰ / _{-0.030}	85 ^{+0.035} / ₀	0.040-0.125	50, 70, 90
CRB-8090-L	80 ^{+0.275} / _{+0.175}	90 ^{+0.125} / _{+0.075}	80 ⁰ / _{-0.030}	90 ^{+0.035} / ₀	0.040-0.125	60, 80, 100
CRB-8595-L	85 ^{+0.275} / _{+0.175}	95 ^{+0.125} / _{+0.075}	85 ⁰ / _{-0.035}	95 ^{+0.035} / ₀	0.040-0.125	60, 80, 100
CRB-90100-L	90 ^{+0.275} / _{+0.175}	100 ^{+0.125} / _{+0.075}	90 ⁰ / _{-0.035}	100 ^{+0.035} / ₀	0.050-0.135	60, 80, 120
CRB-95105-L	95 ^{+0.310} / _{+0.185}	105 ^{+0.125} / _{+0.075}	95 ⁰ / _{-0.035}	105 ^{+0.035} / ₀	0.050-0.135	60, 80, 120
CRB-100110-L	100 ^{+0.310} / _{+0.185}	110 ^{+0.135} / _{+0.085}	100 ⁰ / _{-0.035}	110 ^{+0.035} / ₀	0.050-0.135	80, 100, 120
CRB-110120-L	110 ^{+0.315} / _{+0.190}	120 ^{+0.135} / _{+0.085}	110 ⁰ / _{-0.035}	120 ^{+0.040} / ₀	0.050-0.140	80, 100, 120
CRB-120130-L	120 ^{+0.340} / _{+0.215}	130 ^{+0.165} / _{+0.090}	120 ⁰ / _{-0.035}	130 ^{+0.040} / ₀	0.050-0.165	100, 120, 150
CRB-130140-L	130 ^{+0.340} / _{+0.215}	140 ^{+0.165} / _{+0.090}	130 ⁰ / _{-0.040}	140 ^{+0.040} / ₀	0.050-0.165	100, 120, 150
CRB-140150-L	140 ^{+0.340} / _{+0.215}	150 ^{+0.165} / _{+0.090}	140 ⁰ / _{-0.040}	150 ^{+0.040} / ₀	0.050-0.165	100, 150, 180
CRB-150160-L	150 ^{+0.340} / _{+0.215}	160 ^{+0.165} / _{+0.090}	150 ⁰ / _{-0.040}	160 ^{+0.040} / ₀	0.050-0.165	120, 150, 180